



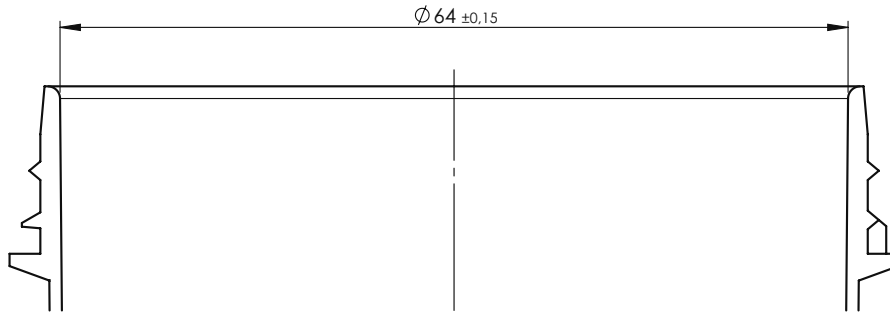
**Taylor Davis**  
...not just ANY packaging company!

# Product Specification Sheet

Product Category: **PLASTIC JARS**

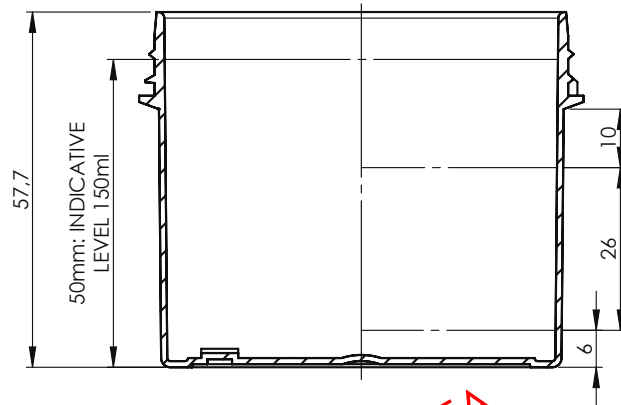
Product Title: **JAR 150ML (65X60) SC/TE 8600201 - WHITE**

Product Code: **JB0150M003**



NECK DETAIL SCALE 2

4 RIGHT LEADING THREADS,  
PITCH=16  
START SPACED AT 90°,  
THREAD PITCH OF 145°



SILK SCREEN PRINT  
AREA:  
198.2mm CIRCUMFERENCE  
INCLUDING 6mm RESERVE

DUPLICATA

D	24/03/04	Screwlock jar was PVI, dimensions			-	-
Issue	Date	Modifications (see historic at back)			Modified	Checked
		Designation: Screwlock jar 65x60 150 ml			Drawn by: NIMA	Date: 20/03/2001
		Raw material: PP	Brimfull capa.: 176±5m	Weight: 17.5±1g	Checked by: MAGE	Date: 16/01/2008
					Reference: 86002..	Drawing n°: WEB00_007
	A4	Scale: 1:1	Standard for dimensions without tolerances: NFT 58 000 Normal class			
ALL REPRODUCTION OR COMMUNICATION TO THIRD PARTY IS STRICTLY FORBIDDEN WITHOUT BERRY WRITTEN AUTHORISATION						